

CTSD(heavy chain) Antibody (Center)
Purified Rabbit Polyclonal Antibody (Pab)
Catalog # AP20803c**Specification**

CTSD(heavy chain) Antibody (Center) - Product Information

Application	WB,E
Primary Accession	P07339
Other Accession	P18242 , P80209
Reactivity	Human
Predicted	Bovine, Mouse
Host	Rabbit
Clonality	Polyclonal
Isotype	Rabbit IgG
Calculated MW	44552

CTSD(heavy chain) Antibody (Center) - Additional Information**Gene ID** 1509**Other Names**

Cathepsin D, Cathepsin D light chain, Cathepsin D heavy chain, CTSD, CPSD

Target/Specificity

This CTSD(heavy chain) antibody is generated from a rabbit immunized with a KLH conjugated synthetic peptide between 241-273 amino acids from the Central region of human CTSD(heavy chain).

Dilution

WB~~1:1000

E~~Use at an assay dependent concentration.

Format

Purified polyclonal antibody supplied in PBS with 0.09% (W/V) sodium azide. This antibody is purified through a protein A column, followed by peptide affinity purification.

Storage

Maintain refrigerated at 2-8°C for up to 2 weeks. For long term storage store at -20°C in small aliquots to prevent freeze-thaw cycles.

Precautions

CTSD(heavy chain) Antibody (Center) is for research use only and not for use in diagnostic or therapeutic procedures.

CTSD(heavy chain) Antibody (Center) - Protein Information**Name** CTSD

Synonyms CPSD

Function Acid protease active in intracellular protein breakdown. Plays a role in APP processing following cleavage and activation by ADAM30 which leads to APP degradation (PubMed:[27333034](#)). Involved in the pathogenesis of several diseases such as breast cancer and possibly Alzheimer disease.

Cellular Location

Lysosome. Melanosome. Secreted, extracellular space. Note=Identified by mass spectrometry in melanosome fractions from stage I to stage IV. In aortic samples, detected as an extracellular protein loosely bound to the matrix (PubMed:20551380)

Tissue Location

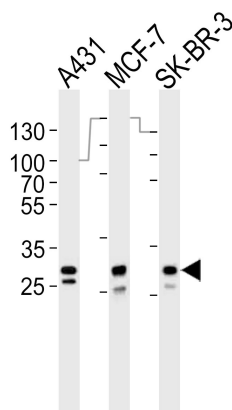
Expressed in the aorta extracellular space (at protein level) (PubMed:20551380). Expressed in liver (at protein level) (PubMed:1426530).

CTSD(heavy chain) Antibody (Center) - Protocols

Provided below are standard protocols that you may find useful for product applications.

- [Western Blot](#)
- [Blocking Peptides](#)
- [Dot Blot](#)
- [Immunohistochemistry](#)
- [Immunofluorescence](#)
- [Immunoprecipitation](#)
- [Flow Cytometry](#)
- [Cell Culture](#)

CTSD(heavy chain) Antibody (Center) - Images



Western blot analysis of lysates from A431, MCF-7, SK-BR-3 cell line (from left to right), using CTSD(heavy chain) Antibody (Center)(Cat. #AP20803c). AP20803c was diluted at 1:1000 at each lane. A goat anti-rabbit IgG H&L(HRP) at 1:10000 dilution was used as the secondary antibody. Lysates at 35ug per lane.

CTSD(heavy chain) Antibody (Center) - Background

Acid protease active in intracellular protein breakdown. Involved in the pathogenesis of several diseases such as breast cancer and possibly Alzheimer disease.

CTSD(heavy chain) Antibody (Center) - References

Faust P.L.,et al.Proc. Natl. Acad. Sci. U.S.A. 82:4910-4914(1985).
Westley B.R.,et al.Nucleic Acids Res. 15:3773-3786(1987).
Redecker B.,et al.DNA Cell Biol. 10:423-431(1991).
Ebert L.,et al.Submitted (JUN-2004) to the EMBL/GenBank/DDBJ databases.
Kalnine N.,et al.Submitted (OCT-2004) to the EMBL/GenBank/DDBJ databases.